



DEZZI DL70C WHEEL LOADER



BUILT AFRICA TOUGH

machinesales@dezzi.co.za
www.dezzi.co.za



DEZZI DL70C WHEEL LOADER

SPECIFICATION SHEET

*Desmond Equipment SA (Pty) Ltd reserves the right to modify specifications without notice.

DEZZI DL70C WHEEL LOADER

ENGINE

Model :	Weichai WP10G
Type :	Water-cooled, in line, turbocharged, high pressure common rail
No. of cylinders :	6
Emission standard :	Tier 3
Displacement :	9,7L
Rated power :	210kW/2200rpm

PERFORMANCE OF LOADER

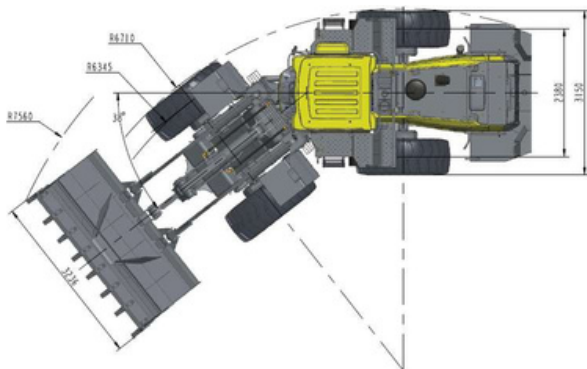
Rated load	7000kg
Max. breakout force	215kN
Maximum dump angle at full height	45°
Dump clearance at full height discharge	3540mm
Dump reach at full height discharge	1220mm
Height of boom pin shaft	4800mm
Digging depth (bucket level)	100mm
Bucket capacity	5m ³
Operating weight	24800kg

TRANSMISSION SYSTEM

Transmission type	Dana electronically controlled fixed shaft
Torque converter	Single-stage, 3-element
Max. travel speed (forward)	40km/h
Max. travel speed (reverse)	25km/h
Forward gears	4
Reverse gear	3

DRIVE AXLE

Type of front axle differential lock	Conventional
Type of rear axle differential lock	Conventional
Swing angle of rear axle	±12°
Type of steering system	Articulated type
Steering system pressure	25Mpa



BRAKE SYSTEM

Service brake type :	Wet brake
Service brake mode :	Air over hydraulic
Parking brake type :	Caliper brake
Parking brake :	Air brake

TYRES

Tyre size	26.5-25-L5
-----------	------------

HYDRAULIC SYSTEM

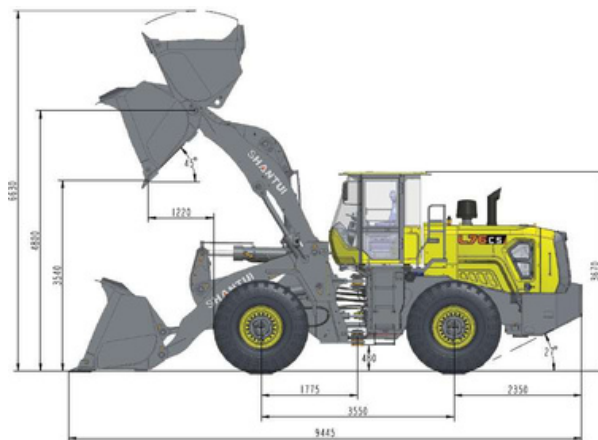
Main pump type	Gear pump
Main relief pressure	25Mpa
Boom lift time	5.5s
Total cycle time	10.1s

SERVICE CAPACITIES

Fuel Tank	365L
Hydraulic oil tank	185L
Engine oil	21L
Drive axle (single side)	43x2L
Transmission	46L
Antifreeze	80L

DIMENSIONS (mm)

A	Vehicle length	9445mm
B	Vehicle width	3236mm
C	Vehicle height	3670mm
D	Wheelbase	3550mm
E	Wheel track	2380mm
F	Min. ground clearance	480mm
G	Steering angle	38°
H	Turning radius (outer side of front tyre)	6345mm
I	Turning radius (centre of front tyre)	6345mm
J	Turning radius (outer edge of bucket)	7560mm



BUILT AFRICA TOUGH

CALL : 0800 DEZZI / 33994

Head Office: +27 (0)39-685 4100

Email: machinesales@dezzi.co.za

www.dezzi.co.za