



DEZZI KATO HD820-R5 EXCAVATOR



BUILT AFRICA TOUGH

machinesales@dezzi.co.za

www.dezzi.co.za



DEZZI KATO HD820-R5 EXCAVATOR

SPECIFICATION SHEET

*Desmond Equipment SA (Pty) Ltd reserves the right to modify specifications without notice.

ENGINE

TYPE : Mitsubishi
MODEL : 4M50
DISPLACEMENT : 4.89 Ltr
POWER : 152Hp (113KW) @ 2 000RPM (ISO Net)
TORQUE : 607Nm @ 1 500RPM (ISO Net)

TRAVEL SYSTEM

- Drive - Independent axial piston motor with reduction for each side
- Brakes - Independent disk parking brake for each side applied automatically when the travel levers are in neutral position
- Lubrication - Sealed for life rollers and front idlers with floating seals

CAB & CONTROLS

- All weather sound suppressed cab on 6 point viscous mounting
- Right-hand lever controls the boom and bucket
- Inner right hand lever (with foot pedal) controls the right-hand track
- Inner left hand lever (with foot pedal) controls the left hand track
- Left hand lever controls the arm and swing
- Pilot control - travel, boom, arm, bucket and swing
- Engine throttle - Electric "Accell Dial"
- Meter & Gauges - Hour meter, Water temperature and Fuel level
- Work lights provided on the left side of boom and right side of front cover
- Lubrication chart on inside of left front cover

HYDRAULIC SYSTEM

- Double variable piston pump and gear pump
- 5 + 4 section multiple control valves (with one free service circuit)
- Maximum discharge flow 2x 236L/min
- Maximum discharge pressure 34.3MPa
- Maximum discharge pressure (high power) 36.3MPa

SERVICE CAPACITIES

COOLING SYSTEM : 25 Liters
ENGINE OIL : 21 Liters
HYDRAULIC TANK : 165 Liters
HYDRAULIC SYSTEM : 260 Liters
DIESEL TANK : 400 Liters
TRACK DRIVES : 2 x 5.0 Liters

OPERATIONAL WEIGHTS

OPERATING WEIGHTS : 20 450kg
GROUND PRESSURE : 46kPa

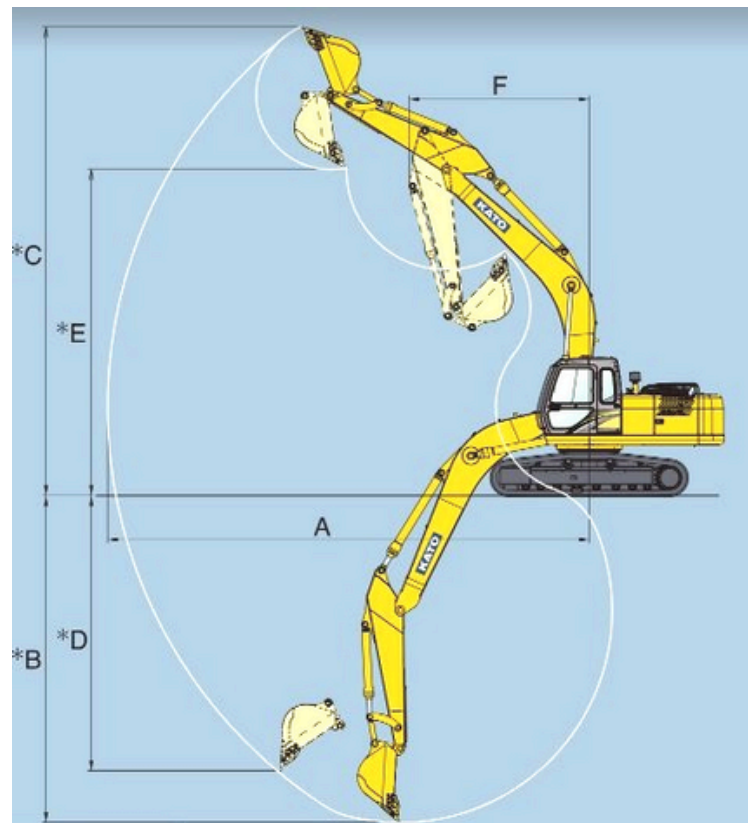
BUCKET ATTACHMENT

BUCKET CAPACITY :	0.8 m3	0.9 m3
BUCKET WIDTH (no side-cutters)	1 020mm	1 190mm
BUCKET WIDTH (with side-cutters)	1 135mm	1 305mm
BUCKET TEETH :	5	5

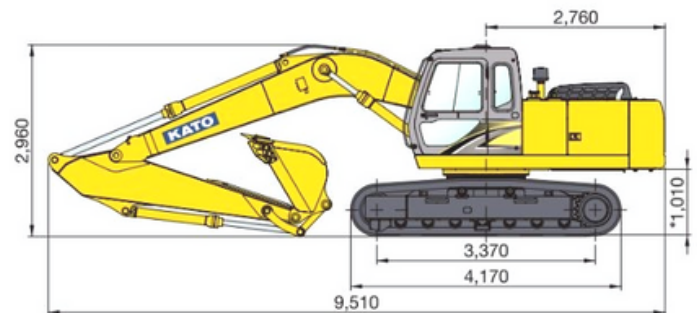
RANGES

ARM RANGE (standard arm 2 930mm)		
*A	Maximum digging radius	9 910mm
*B	Maximum digging depth	6 700mm
*C	Maximum digging height	9 760mm
*D	Maximum vertical wall	5 860mm
*E	Maximum dumping height	6 840mm
*F	Minimum swing radius	3 460mm

Operational Ranges



Dimensions - HD820-R5



Machine Width - 2 820mm

BUILT AFRICA TOUGH



CALL : 0800 DEZZI / 33994

Head Office: +27 (0)39-685 4100

Email: machinesales@dezzi.co.za

www.dezzi.co.za