



DEZZI KATO HD512-R5 EXCAVATOR



BUILT AFRICA TOUGH

machinesales@dezzi.co.za

www.dezzi.co.za



DEZZI KATO HD512-R5 EXCAVATOR

SPECIFICATION SHEET

*Desmond Equipment SA (Pty) Ltd reserves the right to modify specifications without notice.

ENGINE

TYPE : Yanmar (four stroke cycle)
 MODEL : 4D37-TLC3B
 DISPLACEMENT : 3.91 Ltr
 POWER : 91Hp (68 KW) @ 2 000 RPM (ISO Net)
 TORQUE : 360Nm @ 1 600 RPM (ISO Net)

TRAVEL SYSTEM

- Drive - Independent axial piston motor with reduction for each side
- Brakes - Independent disk parking brake for each side applied automatically when the travel levers are in neutral position
- Lubrication - Sealed for life rollers and front idlers with floating seals

CAB & CONTROLS

- All weather sound suppressed cab on 4 point viscous mounting
- Right-hand lever controls the boom and bucket
- Inner right hand lever (with foot pedal) controls the right-hand track
- Inner left hand lever (with foot pedal) controls the left hand track
- Left hand lever controls the arm and swing
- Pilot control - travel, boom, arm, bucket and swing
- Engine throttle - Electric "Accell Dial"
- Meter & Gauges - Operation mode, engine rpm, warning lights
- Work lights provided on the left side of boom and right side of front cover

HYDRAULIC SYSTEM

- Double variable piston pump and gear pump
- 3 + 4 section multiple control valves (with one free service circuit)
- Maximum discharge flow 2x 121L/min
- Maximum discharge pressure 31.4MPa
- Maximum discharge pressure (high power) 32.8MPa

SERVICE CAPACITIES

COOLING SYSTEM : 19 Liters
 ENGINE OIL : 17 Liters
 HYDRAULIC TANK : 50.9 Liters
 HYDRAULIC SYSTEM : 158 Liters
 FUEL TANK : 275 Liters
 TRACK DRIVES : 2 x 2.1 Liters

OPERATIONAL WEIGHTS

OPERATING WEIGHTS : 12 600kg
 GROUND PRESSURE : 40kPa

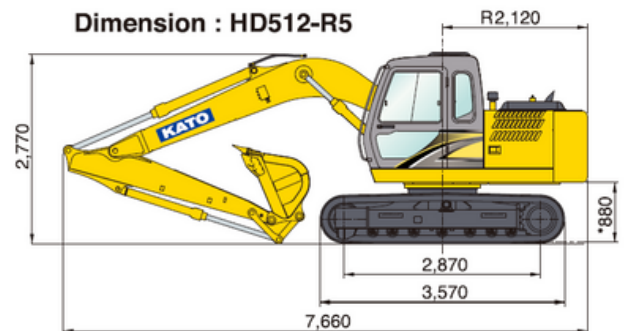
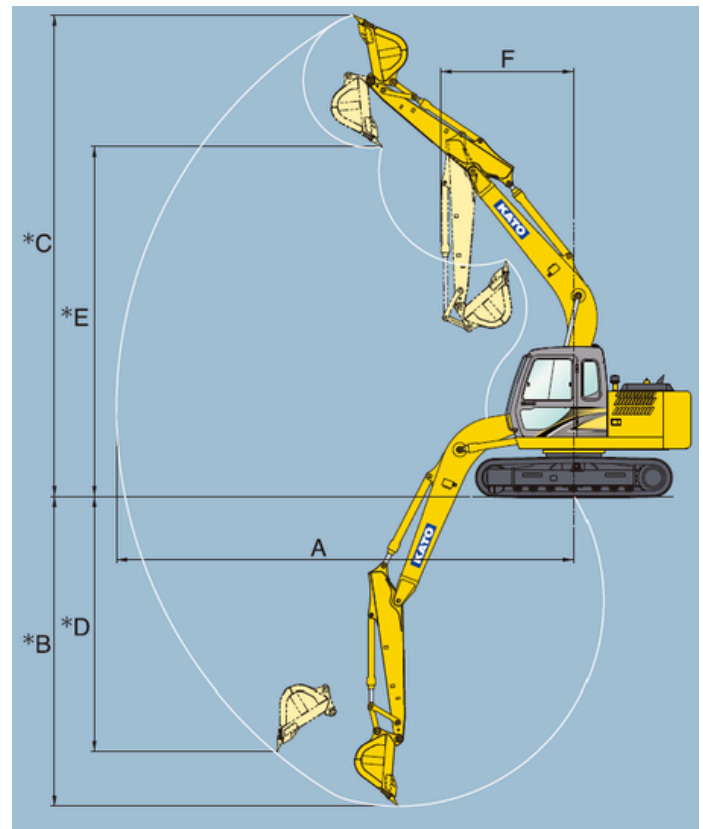
BUCKET ATTACHMENT

BUCKET CAPACITY :	0.4 m3	0.6 m3
BUCKET WIDTH (no side-cutters)	785mm	1090mm
BUCKET WIDTH (with side-cutters)	875mm	1180mm
BUCKET TEETH :	4	5

RANGES

ARM RANGE (standard arm 2500mm)		
*A	Maximum digging radius	8 340mm
*B	Maximum digging depth	5 630mm
*C	Maximum digging height	8 780mm
*D	Maximum vertical wall	4 630mm
*E	Maximum dumping height	6 370mm
*F	Minimum swing radius	2 410mm

Operational Ranges



Machine Width - 2 490mm

BUILT AFRICA TOUGH



CALL : 0800 DEZZI / 33994

Head Office: +27 (0)39-685 4100

Email: machinesales@dezzi.co.za

www.dezzi.co.za