



# DEZZI KATO HD1023-R5 EXCAVATOR



**BUILT AFRICA TOUGH**

[machinesales@dezzi.co.za](mailto:machinesales@dezzi.co.za)

[www.dezzi.co.za](http://www.dezzi.co.za)



# DEZZI KATO HD1023-R5 EXCAVATOR

## SPECIFICATION SHEET

\*Desmond Equipment SA (Pty) Ltd reserves the right to modify specifications without notice.

### ENGINE

TYPE : Mitsubishi  
 MODEL : 4M50  
 DISPLACEMENT : 4.89 Ltr  
 POWER : 164Hp (122KW) @ 2 200RPM (ISO Net)  
 TORQUE : 606Nm @ 1 500RPM (ISO Net)

### TRAVEL SYSTEM

- Drive - Independent axial piston motor with reduction for each side
- Brakes - Independent disk parking brake for each side applied automatically when the travel levers are in neutral position
- Lubrication - Sealed for life rollers and front idlers with floating seals

### CAB & CONTROLS

- All weather sound suppressed cab on 6 point viscous mounting
- Right hand lever controls the boom and bucket
- Inner right hand lever (with foot pedal) controls the right-hand track
- Inner left-hand lever (with foot pedal) controls the left-hand track
- Left-hand lever controls the arm and swing
- Pilot control - travel, boom, arm, bucket and swing
- Engine throttle - Electric "Accell Dial"
- Meter & Gauges - Hour meter, water temperature and fuel level
- Work lights provided on left side of boom and right side of front cover
- Lubrication chart on inside of left front cover

### HYDRAULIC SYSTEM

- Double variable piston pump and gear pump
- 5 + 4 section multiple control valves (with one free service circuit)
- Maximum discharge flow 2x 260L/min
- Maximum discharge pressure 34.3MPa
- Maximum discharge pressure (high power) 36.3MPa

### SERVICE CAPACITIES

COOLING SYSTEM : 25 Liters  
 ENGINE OIL : 21 Liters  
 HYDRAULIC TANK : 165 Liters  
 HYDRAULIC SYSTEM : 290 Liters  
 DIESEL TANK : 470 Liters  
 TRACK DRIVES : 2 x 5.3 Liters

### OPERATIONAL WEIGHTS

OPERATING WEIGHTS : 23 700kg  
 GROUND PRESSURE : 52kPa

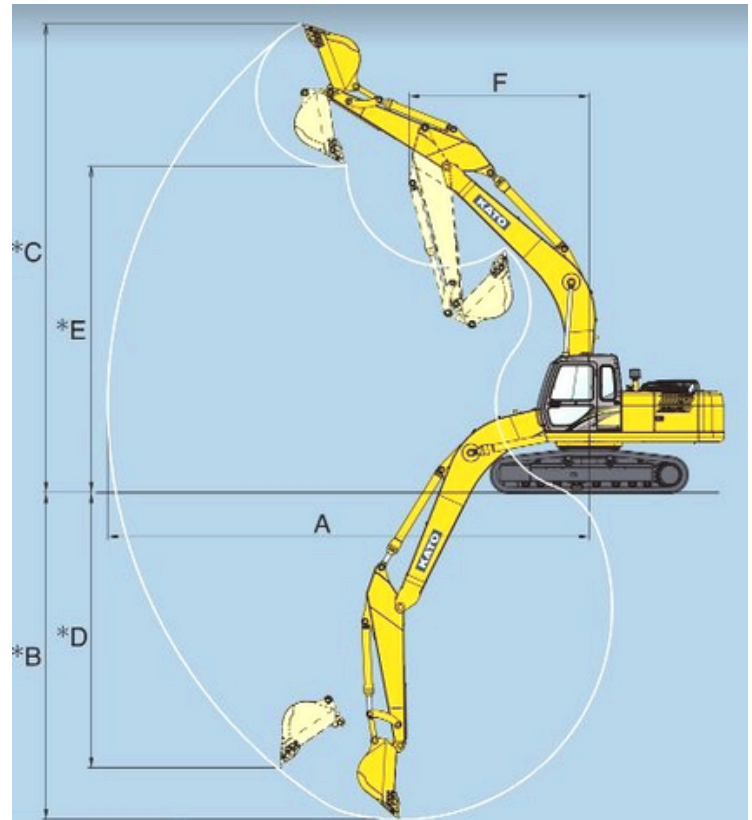
### BUCKET ATTACHMENT

|                                  |         |         |
|----------------------------------|---------|---------|
| BUCKET CAPACITY :                | 1.0 m3  | 1.1 m3  |
| BUCKET WIDTH (no side-cutters)   | 1 170mm | 1 220mm |
| BUCKET WIDTH (with side-cutters) | 1 280mm | 1 330mm |
| BUCKET TEETH :                   | 5       | 5       |

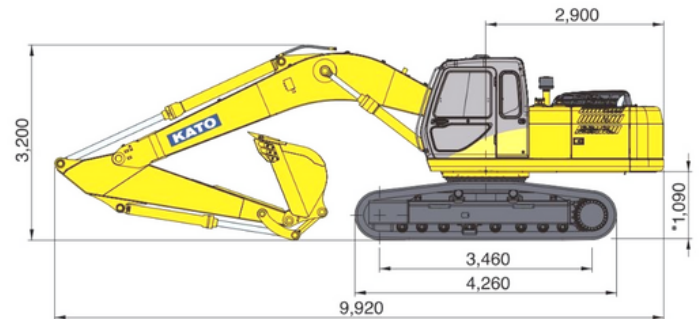
### RANGES

| ARM RANGE (standard arm 2 960mm) |          |
|----------------------------------|----------|
| *A Maximum digging radius        | 10 350mm |
| *B Maximum digging depth         | 7 010mm  |
| *C Maximum digging height        | 10 060mm |
| *D Maximum vertical wall         | 5 910mm  |
| *E Maximum dumping height        | 6 990mm  |
| *F Minimum swing radius          | 3 870mm  |

### Operational Ranges



### Dimensions - HD1023-R5



Machine Width - 2 990mm

**BUILT AFRICA TOUGH**



CALL : 0800 DEZZI / 33994

Head Office: +27 (0)39-685 4100

Email: [machinesales@dezzi.co.za](mailto:machinesales@dezzi.co.za)

[www.dezzi.co.za](http://www.dezzi.co.za)