



DEZZI KATO HD1430-R5 EXCAVATOR



BUILT AFRICA TOUGH

www.dezzi.co.za



DEZZI KATO HD1430-R5 EXCAVATOR

SPECIFICATION SHEET

*Desmond Equipment SA (Pty) Ltd reserves the right to modify specifications without notice.

ENGINE

TYPE : Mitsubishi
 MODEL : 6N60-TL
 DISPLACEMENT : 7.54 Ltr
 POWER : 183kW @ 2 150RPM (ISO Net)
 TORQUE : 824Nm @ 1 800RPM (ISO Net)

TRAVEL SYSTEM

- Drive - Independent axial piston motor with reduction for each side
- Brakes - Independent disk parking brake for each side applied automatically when the travel levers are in neutral position
- Lubrication - Sealed-for-life rollers and front idlers with floating seals

CAB & CONTROLS

- All weather sound suppressed cab on 6 point viscous mounting
- Right hand lever controls the boom and bucket
- Inner right hand lever (with foot pedal) controls the right-hand track
- Inner left-hand lever (with foot pedal) controls the left-hand track
- Left-hand lever controls the arm and swing
- Pilot control - travel, boom, arm, bucket and swing
- Engine throttle - Electric "Accell Dial"
- Meter & Gauges - Hour meter, water temperature and fuel level
- Work lights provided on left side of boom and right side of front cover
- Lubrication chart on inside of left front cover

HYDRAULIC SYSTEM

- Double variable piston pump and gear pump
- 5 + 4 section multiple control valves (with one free service circuit)
- Maximum discharge flow 2x 307L/min
- Maximum discharge pressure 31.4MPa
- Maximum discharge pressure (high power) 32.9MPa

SERVICE CAPACITIES

COOLING SYSTEM : 45 Liters
 ENGINE OIL : 33 Liters
 HYDRAULIC TANK : 200 Liters
 HYDRAULIC SYSTEM : 405 Liters
 DIESEL TANK : 660 Liters
 TRACK DRIVES : 2 x 4.0 Liters

OPERATIONAL WEIGHTS

OPERATING WEIGHTS : 31 600kg
 GROUND PRESSURE : 63kPa

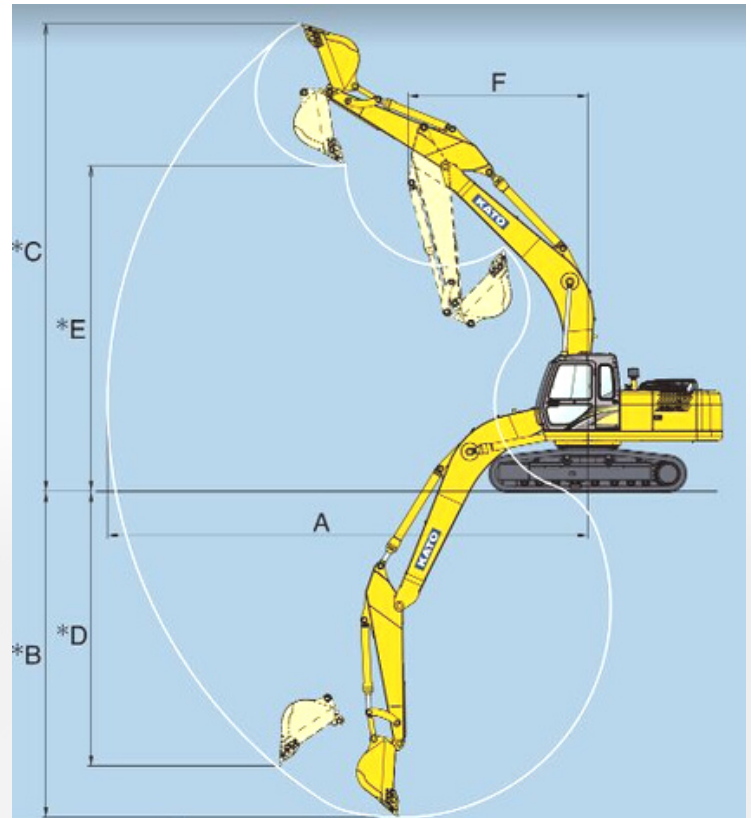
BUCKET ATTACHMENT

BUCKET CAPACITY :	1.4 m3	1.6 m3
BUCKET WIDTH (no side-cutters)	1 290mm	1 470mm
BUCKET WIDTH (with side-cutters)	1 400mm	1 590mm
BUCKET TEETH :	5	5

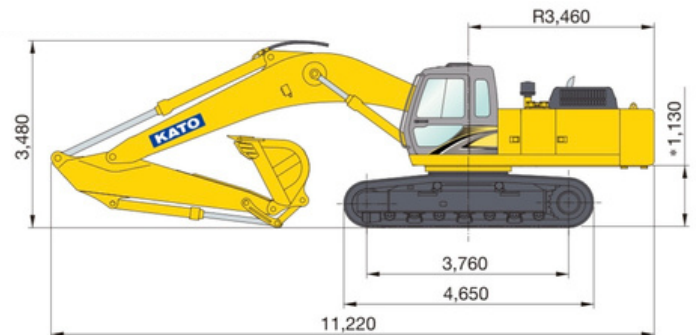
RANGES

ARM RANGE (standard arm 3 140mm)		
*A	Maximum digging radius	11 190mm
*B	Maximum digging depth	7 440mm
*C	Maximum digging height	10 420mm
*D	Maximum vertical wall	6 040mm
*E	Maximum dumping height	7 370mm
*F	Minimum swing radius	4 640mm

Operational Ranges



Dimensions - HD1430-R5



Machine Width - 3 190mm

BUILT AFRICA TOUGH



CALL : 0800 DEZZI / 33994

Head Office: +27 (0)39-685 4100

Email: machinesales@dezzi.co.za

www.dezzi.co.za