



# DEZZI KATO HD1023-R5 EXCAVATOR



**BUILT AFRICA TOUGH**

[www.dezzi.co.za](http://www.dezzi.co.za)



# DEZZI KATO HD1023-R5 EXCAVATOR

## SPECIFICATION SHEET

\*Desmond Equipment SA (Pty) Ltd reserves the right to modify specifications without notice.

### ENGINE

TYPE : Mitsubishi  
 MODEL : 4M50  
 DISPLACEMENT : 4.89 Ltr  
 POWER : 122kW @ 2 200RPM (ISO Net)  
 TORQUE : 606Nm @ 1 500RPM (ISO Net)

### TRAVEL SYSTEM

- Drive - Independent axial piston motor with reduction for each side
- Brakes - Independent disk parking brake for each side applied automatically when the travel levers are in neutral position
- Lubrication - Sealed for life rollers and front idlers with floating seals

### CAB & CONTROLS

- All weather sound suppressed cab on 6 point viscous mounting
- Right hand lever controls the boom and bucket
- Inner right hand lever (with foot pedal) controls the right-hand track
- Inner left-hand lever (with foot pedal) controls the left-hand track
- Left-hand lever controls the arm and swing
- Pilot control - travel, boom, arm, bucket and swing
- Engine throttle - Electric "Accell Dial"
- Meter & Gauges - Hour meter, water temperature and fuel level
- Work lights provided on left side of boom and right side of front cover
- Lubrication chart on inside of left front cover

### HYDRAULIC SYSTEM

- Double variable piston pump and gear pump
- 5 + 4 section multiple control valves (with one free service circuit)
- Maximum discharge flow 2x 260L/min
- Maximum discharge pressure 34.3MPa
- Maximum discharge pressure (high power) 36.3MPa

### SERVICE CAPACITIES

COOLING SYSTEM : 25 Liters  
 ENGINE OIL : 21 Liters  
 HYDRAULIC TANK : 165 Liters  
 HYDRAULIC SYSTEM : 290 Liters  
 DIESEL TANK : 470 Liters  
 TRACK DRIVES : 2 x 5.3 Liters

### OPERATIONAL WEIGHTS

OPERATING WEIGHTS : 23 700kg  
 GROUND PRESSURE : 52kPa

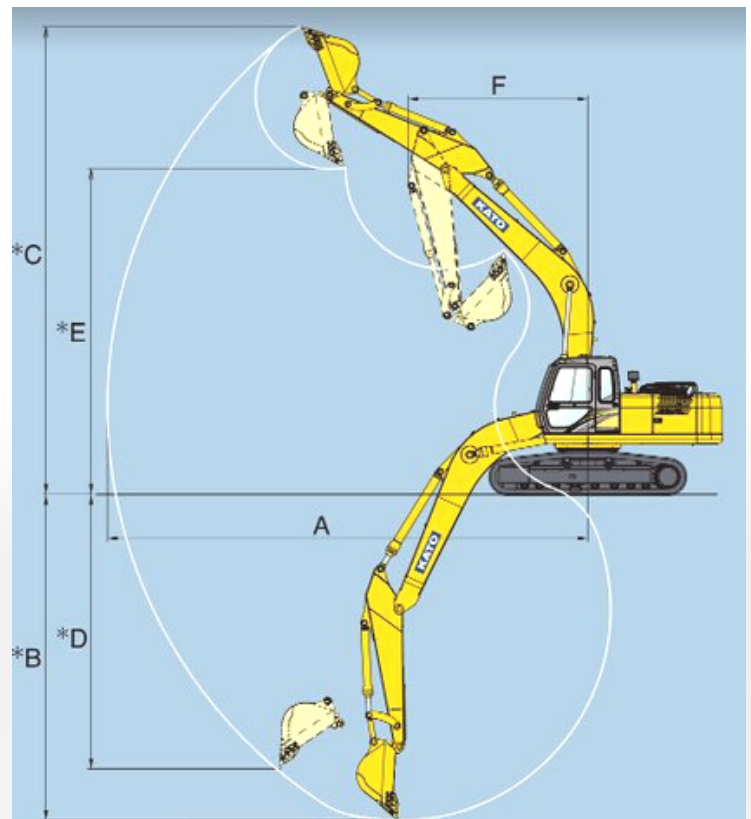
### BUCKET ATTACHMENT

BUCKET CAPACITY :	1.0 m3	1.1 m3
BUCKET WIDTH (no side-cutters)	1 170mm	1 220mm
BUCKET WIDTH (with side-cutters)	1 280mm	1 330mm
BUCKET TEETH :	5	5

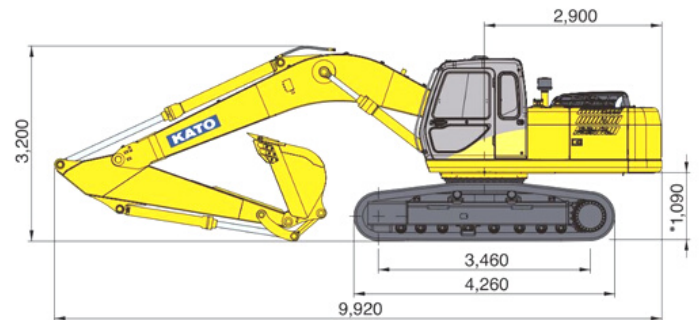
### RANGES

ARM RANGE (standard arm 2 960mm)	
*A Maximum digging radius	10 350mm
*B Maximum digging depth	7 010mm
*C Maximum digging height	10 060mm
*D Maximum vertical wall	5 910mm
*E Maximum dumping height	6 990mm
*F Minimum swing radius	3 870mm

### Operational Ranges



### Dimensions - HD1023-R5



Machine Width - 2 990mm

**BUILT AFRICA TOUGH**



CALL : 0800 DEZZI / 33994

Head Office : +27 (0)39-685 4100

Email : machinesales@dezzi.co.za

www.dezzi.co.za