



DEZZI CMI 884 BACKHOE LOADER



BUILT AFRICA TOUGH

www.dezzi.co.za



DEZZI CMI 884 BACKHOE LOADER

SPECIFICATION SHEET

*Desmond Equipment SA (Pty) Ltd reserves the right to modify specifications without notice.

ENGINE

TYPE : TIER II
 MODEL : Perkins
 CAPACITY : 1104C-44TA
 POWER : 4.4 Liters
 TORQUE : 100hp / 74.5kW @ 2200RPM
 408 Nm @ 1400RPM

TRANSMISSION

TYPE : ZF 4WG 94
 MODEL : Powershuttle - Autoshift
 MAXIMUM SPEED IN GEARS : 4 Forward - 4 Reverse
 SPEED (4TH GEAR) : 40Km/H
 TRANSMISSION DISCONNECT : With brake system

AXLES

FRONT : ZF - Ease of operation with Hydrostatic steering system even under high load conditions.
 Limited Slip differential. 18° oscillation on front axle.
 52° steering angle for perfect maneuverability.
 REAR : ZF - High input torque with outboard planetary design.
 Electro-hydraulic operated differential 100% locking acts on rear axle.
 Self adjusting high torque internal wet multi disc service brake.

TYRES

FRONT 4WD : 12.5/80-18
 REAR 4WD : 16.9-28

BRAKES

2 WHEEL / 4 WHEEL : 2 wheel
 SERVICE BRAKE : Hydraulic wet multi disc
 PARK BRAKE : Mechanical control on rear axle

STEERING

STEERING TYPE : 2 Wheel
 POWER STEERING : Hydrostatic

ELECTRICS

BATTERY : 12 Volt / 120 Amp
 STARTER : 3kW

HYDRAULIC SYSTEM

- Hydraulic speed control system
- Bolt type cylinder design with all sealed pins and bushes for easy maintenance and long life
- Cushioned swing and boom provides maximum operator comfort for fast and smooth trenching
- Hydraulic & Transmission oil coolers

SYSTEM TYPE : O-Centre
 HYDRAULIC PUMP : Tandem Gear
 MAX FLOW : 90 + 64L/min
 MAX PRESSURE : 220 bar

HYDRAULIC CONTROLS

BACKHOE CONTROLS : Mechanical Control Levers
 LOADER CONTROLS : Mechanical Control Levers

CAB

- Specially designed ROPS/FOPS cab provides perfect operating comfort, excellent visibility and reliability
- Full opening of rear window & side windows and partial and full opening of the doors provide superior fresh air circulation in the cab, tinted safety glass improves visibility and sun visor protects operator against sunlight and ensures clear vision.
- Air-conditioned cabin and operator fan as standard
- Radio/CD Player

SERVICE CAPACITIES

COOLING SYSTEM : 25 Liters
 ENGINE OIL : 8.4 Liters
 REAR AXLE DIFFERENTIAL : 16 Liters
 FRONT AXLE DIFFERENTIAL : 7.8 Liters
 HYDRAULIC TANK : 75 Liters
 HYDRAULIC SYSTEM : 130 Liters
 DIESEL TANK : 140 Liters

OPERATIONAL WEIGHTS

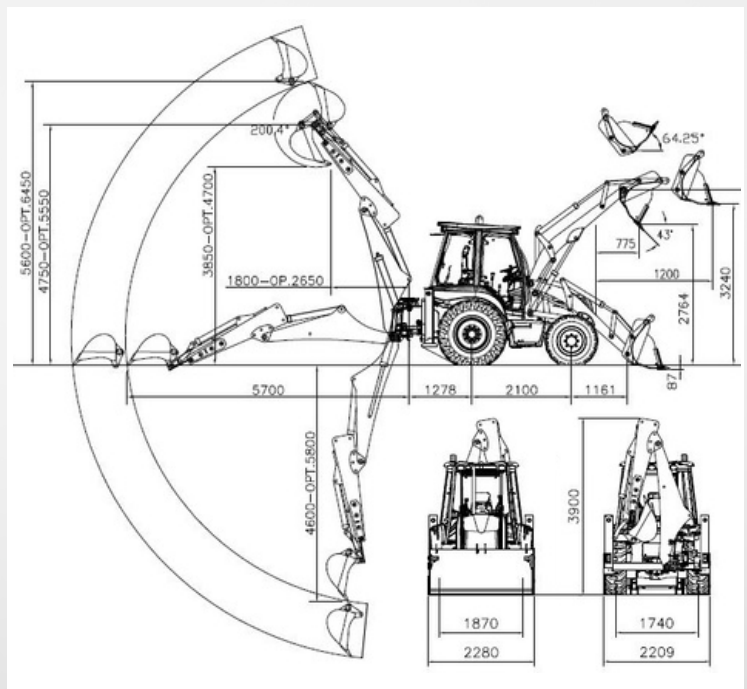
7 600kg - 8 100kg

BACKHOE ATTACHMENT

MAX BUCKET TEAROUT : 59,1 kN
 DIPPER TEAROUT : 31,8 kN
 BUCKET CAPACITY : 0.2m³

LOADER ATTACHMENT

BUCKET CAPACITY : 1.1 m³
 BREAKOUT FORCE LIFT : 60.5 kN
 BREAKOUT FORCE SHOVEL MAX : 81.5 kN
 SHOVEL WIDTH : 2 280mm
 LIFT TO FULL HEIGHT : 3 500kg



CALL : 0800 DEZZI / 33994
 Head Office: +27 (0)39-685 4100
 Email: machinesales@dezzi.co.za
 www.dezzi.co.za